

Test Report

(EVERLIGHT ELECTRONICS CO., LTD.)

6-8 (NO. 6-8, ZHONGHUA RD., SHULIN DIST., NEW TAIPEI CITY 23860, TAIWAN)

(The following sample(s) was/were submitted and identified by the applicant as)


BASIC INFORMATION	
Type of Product	LAMP LED
Supplier Company Name	EVERLIGHT
Address	NO.6-8, ZHONGHUA RD., SHULIN DIST., NEW TAIPEI CITY 23860, TAIWAN
Tel / Fax / Email	TEL:886-2685-6688
	FAX:886-2685-6699
	E-MAIL: allenchiang@everlight.com
Contact Person	Allen
EVERLIGHT REPORT NO	EVERLIGHT-LAMP LED SERIES, LAMP / IR / HIR / PT / 2PT / PD PTD SERIES Sampling Product : IR333C/H0/L10-SGS-12-Jul-2023
PRODUCT INFORMATION	
Product/component Sample description	LIGHT-ELECTRICITY TRANSFER
Quantity (numbers or weight)	0.3002 g
EVERLIGHT P/N	LAMP LED SERIES, LAMP / IR / HIR / PT / 2PT / PD PTD SERIES Sampling Product : IR333C/H0/L10
Product Lot No	SZ230627-2007829
Country of Origin	CHINA
TEST INFORMATION	
Sample preparation	CUTTING
Test Method	RoHS: IEC 62321, Halogen: BS EN 14582
MDL	Cd, Pb, Hg: 2 mg/kg, PBBs/PBDEs: 5 mg/kg, Halogen: 50 mg/kg

(Sample Submitted By) : (EVERLIGHT ELECTRONICS CO., LTD.)

(Sample Receiving Date) : 30-Jun-2023

(Testing Period) : 30-Jun-2023 to 12-Jul-2023

(Test Results) : (Please refer to following pages).

Troy Chang

 Troy Chang / Department Manager
 Signed for and on behalf of



PIN CODE: 2AC68444

Test Report

(EVERLIGHT ELECTRONICS CO., LTD.)

6-8 (NO. 6-8, ZHONGHUA RD., SHULIN DIST., NEW TAIPEI CITY 23860, TAIWAN)

(Test Requested : (1) RoHS 2011/65/EU Annex II (EU) 2015/863
 , DBP, BBP, DEHP, DIBP (As specified by client, with reference to RoHS 2011/65/EU Annex II and amending Directive (EU) 2015/863 to determine Cadmium, Lead, Mercury, Cr(VI), PBBs, PBDEs, DBP, BBP, DEHP, DIBP contents in the submitted sample(s).)

(2) PAHs (As specified by client, to test PAHs and other item(s).)

(Conclusion : (1) , DBP, BBP, DEHP, DIBP RoHS 2011/65/EU Annex II (EU) 2015/863
 (Based on the performed tests on submitted sample(s), the test results of Cadmium, Lead, Mercury, Cr(VI), PBBs, PBDEs, DBP, BBP, DEHP, DIBP comply with the limits as set by RoHS Directive (EU) 2015/863 amending Annex II to Directive 2011/65/EU.)

(2) (AfPS) GS PAHs
 3 (Based upon the performed tests on the submitted sample(s), the test results of PAHs (15 items) comply with the limits of PAHs requirement (Category 3) Other consumer products as set by German Committee on Product Safety (AfPS) GS PAHs.)

(Test Part Description)

- No.1 : (BODY)
- No.2 : (PLATING LAYER OF SILVER COLORED METAL PIN)
- No.3 : (BASE MATERIAL OF SILVER COLORED METAL PIN)
- No.4 : () (SILVER COLORED METAL PIN (INCLUDING THE PLATING LAYER))

(Test Results)

(Test Items)	(Method)	(Unit)	MDL	(Result)			(Limit)
				No.1	No.2	No.3	
(Cd) (Cadmium (Cd))	IEC 62321-5: 2013 (With reference to IEC	mg/kg	2	n.d.	---	---	100
(Pb) (Lead (Pb))	62321-5: 2013, analysis was performed by ICP-OES.)	mg/kg	2	n.d.	---	---	1000

This document is issued by the Company subject to its General Conditions of Service printed overleaf, available on request or accessible at <https://www.sgs.com.tw/terms-of-service> and, for electronic format documents, subject to Terms and Conditions for Electronic Documents at <https://www.sgs.com.tw/terms-of-service>. Attention is drawn to the limitation of liability, indemnification and jurisdiction issues defined therein. Any holder of this document is advised that information contained hereon reflects the Company's findings at the time of its intervention only and within the limits of client's instruction, if any. The Company's sole responsibility is to its Client and

Test Report

(EVERLIGHT ELECTRONICS CO., LTD.)

6-8 (NO. 6-8, ZHONGHUA RD., SHULIN DIST., NEW TAIPEI CITY 23860, TAIWAN)

(Test Items)	(Method)	(Unit)	MDL	(Result)			(Limit)
				No.1	No.2	No.3	
(Hg) (Mercury (Hg))	IEC 62321-4: 2013+ AMD1: 2017 (With reference to IEC 62321-4: 2013+ AMD1: 2017, analysis was performed by ICP-OES.)	mg/kg	2	n.d.	---	---	1000
Cr(VI) (Hexavalent Chromium Cr(VI))	IEC 62321-7-2: 2017 - (With reference to IEC 62321-7-2: 2017, analysis was performed by UV-VIS.)	mg/kg	8	n.d.	---	---	1000
(Cd) (Cadmium (Cd))	IEC 62321-5: 2013 (IEC 62321-5: 2013 application of modified digestion by surface etching, analysis was performed by ICP-OES.)	mg/kg	2	---	n.d.	---	100
(Pb) (Lead (Pb))	IEC 62321-5: 2013 (IEC 62321-5: 2013 application of modified digestion by surface etching, analysis was performed by ICP-OES.)	mg/kg	2	---	38.3	---	1000
(Hg) (Mercury (Hg))	IEC 62321-4: 2013+ AMD1: 2017 (IEC 62321-4: 2013+ AMD1: 2017 application of modified digestion by surface etching, analysis was performed by ICP-OES.)	mg/kg	2	---	n.d.	---	1000
(Cd) (Cadmium (Cd))	IEC 62321-5: 2013 (With reference to IEC 62321-5: 2013, analysis was performed by ICP-OES.)	mg/kg	2	---	---	n.d.	100
(Pb) (Lead (Pb))	IEC 62321-5: 2013 (With reference to IEC 62321-5: 2013, analysis was performed by ICP-OES.)	mg/kg	2	---	---	n.d.	1000
(Hg) (Mercury (Hg))	IEC 62321-4: 2013+ AMD1: 2017 (With reference to IEC 62321-4: 2013+ AMD1: 2017, analysis was performed by ICP-OES.)	mg/kg	2	---	---	n.d.	1000



(No.): ETR23605635

(Date): 12-Jul-2023

(Page): 4 of 21

Test Report

(EVERLIGHT ELECTRONICS CO., LTD.)

6-8 (NO. 6-8, ZHONGHUA RD., SHULIN DIST., NEW TAIPEI CITY 23860, TAIWAN)

(Method)	(Unit)	MDL			(Limit)
		No.1	No.2	No.3	

This document is issued by the Company subject to its General Conditions of Service printed overleaf, available on request or accessible at <https://www.sgs.com.tw/terms-of-service> and, for electronic format documents, subject to Terms and Conditions for Electronic Documents at <https://www.sgs.com.tw/terms-of-service>. Attention is drawn to the limitation of liability, indemnification and jurisdiction issues defined therein. Any holder of this document is advised that information contained hereon reflects the Company's findings at the time of its intervention only and within the limits of client's instruction, if any. The Company's sole responsibility is to its Client and



(No.): ETR23605635

(Date): 12-Jul-2023

(Page): 5 of 21

Test Report

(EVERLIGHT ELECTRONICS CO., LTD.)

6-8 (NO. 6-8, ZHONGHUA RD., SHULIN DIST., NEW TAIPEI CITY 23860, TAIWAN)

(Method)	(Unit)	MDL	No.1	No.2	No.3	(Limit)
IEC 62321-8: 2017 (With reference to IEC 62321-8: 2017, analysis was performed by GC/MS.)	/ mg/kg	50	n.d.			

This document is issued by the Company subject to its General Conditions of Service printed overleaf, available on request or accessible at <https://www.sgs.com.tw/terms-of-service> and, for electronic format documents, subject to Terms and Conditions for Electronic Documents at <https://www.sgs.com.tw/terms-of-service>. Attention is drawn to the limitation of liability, indemnification and jurisdiction issues defined therein. Any holder of this document is advised that information contained hereon reflects the Company's findings at the time of its intervention only and within the limits of client's instruction, if any. The Company's sole responsibility is to its Client and

Test Report

(EVERLIGHT ELECTRONICS CO., LTD.)

6-8 (NO. 6-8, ZHONGHUA RD., SHULIN DIST., NEW TAIPEI CITY 23860, TAIWAN)

(Test Items)	(Method)	(Unit)	MDL	(Result)			(Limit)
				No.1	No.2	No.3	
(DIOP) (Diisooctyl phthalate (DIOP)) (CAS No.: 27554-26-3)	IEC 62321-8: 2017 / (With reference to IEC 62321-8: 2017, analysis was performed by GC/MS.)	mg/kg	50	n.d.	---	---	-
(DNNP) (Di-nonyl phthalate (DNNP)) (CAS No.: 84-76-4)	IEC 62321-8: 2017 / (With reference to IEC 62321-8: 2017, analysis was performed by GC/MS.)	mg/kg	50	n.d.	---	---	-
(HBCDD) (- HBCDD, - HBCDD, - HBCDD) (Hexabromocyclododecane (HBCDD) and all major diastereoisomers identified (- HBCDD, - HBCDD, - HBCDD)) (CAS No.: 25637-99-4, 3194-55-6 (134237-51-7, 134237-50-6, 134237-52-8))	IEC 62321: 2008 / (With reference to IEC 62321: 2008, analysis was performed by GC/MS.)	mg/kg	5	n.d.	---	---	-
(F) (Fluorine (F)) (CAS No.: 14762-94-8)	BS EN 14582: 2016 (With reference to BS EN 14582: 2016, analysis was performed by IC.)	mg/kg	50	n.d.	---	---	-
(Cl) (Chlorine (Cl)) (CAS No.: 22537-15-1)		mg/kg	50	1150	---	---	-
(Br) (Bromine (Br)) (CAS No.: 10097-32-2)		mg/kg	50	1150	---	---	-
(I) (Iodine (I)) (CAS No.: 14362-44-8)		mg/kg	50	n.d.	---	---	-
(PFOS and its salts) (CAS No.: 1763-23-1 and its salts)	CEN/TS 15968: 2010 (With reference to CEN/TS 15968: 2010, analysis was performed by LC/MS/MS.)	mg/kg	0.01	n.d.	---	---	-
(PFOA and its salts) (CAS No.: 335-67-1 and its salts)	CEN/TS 15968: 2010 (With reference to CEN/TS 15968: 2010, analysis was performed by LC/MS/MS.)	mg/kg	0.01	n.d.	---	---	-
(Be) (Beryllium (Be)) (CAS No.: 7440-41-7)	US EPA 3052: 1996 (With reference to US EPA 3052: 1996, analysis was performed by ICP-OES.)	mg/kg	2	n.d.	---	---	-

Test Report

(EVERLIGHT ELECTRONICS CO., LTD.)

6-8 (NO. 6-8, ZHONGHUA RD., SHULIN DIST., NEW TAIPEI CITY 23860, TAIWAN)

(Test Items)	(Method)	(Unit)	MDL	(Result)			(Limit)
				No.1	No.2	No.3	
(Polycyclic Aromatic Hydrocarbons) (PAHs)							
(a) (Benzo[a]pyrene) (CAS No.: 50-32-8)	A fPS GS 2019:01 PAK / (With reference to A fPS GS 2019:01 PAK, analysis was performed by GC/MS.)	mg/kg	0.2	n.d.	---	---	
(e) (Benzo[e]pyrene) (CAS No.: 192-97-2)		mg/kg	0.2	n.d.	---	---	
(Benzo[a]anthracene) (CAS No.: 56-55-3)		mg/kg	0.2	n.d.	---	---	
(b) (Benzo[b]fluoranthene) (CAS No.: 205-99-2)		mg/kg	0.2	n.d.	---	---	
(j) (Benzo[j]fluoranthene) (CAS No.: 205-82-3)		mg/kg	0.2	n.d.	---	---	
(k) (Benzo[k]fluoranthene) (CAS No.: 207-08-9)		mg/kg	0.2	n.d.	---	---	
(Chrysene) (CAS No.: 218-01-9)		mg/kg	0.2	n.d.	---	---	
(Dibenzo[a,h]anthracene) (CAS No.: 53-70-3)		mg/kg	0.2	n.d.	---	---	
(Benzo[g,h,i]perylene) (CAS No.: 191-24-2)		mg/kg	0.2	n.d.	---	---	
(Indeno[1,2,3-c,d]pyrene) (CAS No.: 193-39-5)		mg/kg	0.2	n.d.	---	---	
(Anthracene) (CAS No.: 120-12-7)		mg/kg	0.2	n.d.	---	---	
(Fluoranthene) (CAS No.: 206-44-0)		mg/kg	0.2	n.d.	---	---	
(Phenanthrene) (CAS No.: 85-01-8)		mg/kg	0.2	n.d.	---	---	
(Pyrene) (CAS No.: 129-00-0)		mg/kg	0.2	n.d.	---	---	
(Naphthalene) (CAS No.: 91-20-3)		mg/kg	0.2	n.d.	---	---	
15 (Sum of 15 PAHs)		mg/kg	-	n.d.	---	---	

This document is issued by the Company subject to its General Conditions of Service printed overleaf, available on request or accessible at <https://www.sgs.com.tw/terms-of-service> and, for electronic format documents, subject to Terms and Conditions for Electronic Documents at <https://www.sgs.com.tw/terms-of-service>. Attention is drawn to the limitation of liability, indemnification and jurisdiction issues defined therein. Any holder of this document is advised that information contained hereon reflects the Company's findings at the time of its intervention only and within the limits of client's instruction, if any. The Company's sole responsibility is to its Client and

Test Report

(EVERLIGHT ELECTRONICS CO., LTD.)

6-8 (NO. 6-8, ZHONGHUA RD., SHULIN DIST., NEW TAIPEI CITY 23860, TAIWAN)

(Test Items)	(Method)	(Unit)	MDL	(Result)	(Limit)
				No.4	
(Be) (Beryllium (Be)) (CAS No.: 7440-41-7)	US EPA 3050B: 1996 (With reference to US EPA 3050B: 1996, analysis was performed by ICP-OES.)	mg/kg	2	n.d.	-

(Note)

1. mg/kg = ppm 0.1wt% = 0.1% = 1000ppm
2. MDL = Method Detection Limit ()
3. n.d. = Not Detected (); MDL / Less than MDL
4. "-" = Not Regulated ()
5. "---" = Not Conducted ()
6. (PFOS and its salts including) :
CAS No.: 1763-23-1, 2795-39-3, 29457-72-5, 29081-56-9, 70225-14-8, 56773-42-3, 251099-16-8, 307-35-7, 91036-71-4, 4021-47-0 and others.
7. (PFOA and its salts including) :
CAS No.: 335-67-1, 335-95-5, 2395-00-8, 335-93-3, 335-66-0, 3825-26-1 and others.
8. (#2) =
 - a. 0.13 µg/cm² . / The sample is positive for Cr(VI) if the Cr(VI) concentration is greater than 0.13 µg/cm². The sample coating is considered to contain Cr(VI).
 - b. n.d. (0.10 µg/cm²) . / The sample is negative for Cr(VI) if Cr(VI) is n.d. (concentration less than 0.10 µg/cm²). The coating is considered a non-Cr(VI) based coating
 - c. 0.10 0.13 µg/cm² . / The result between 0.10 µg/cm² and 0.13 µg/cm² is considered to be inconclusive - unavoidable coating variations may influence the determination.
9. ILAC-G8:09/2019 (w=0)
(Unless otherwise stated , the decision rule for conformity reporting is based on Binary Statement for Simple Acceptance Rule (w=0) stated in ILAC-G8:09/2019. According to this rule, the judgement of conformity is based on the comparing test results with limits.)



(No.): ETR23605635

(Date): 12-Jul-2023

(Page): 9 of 21

Test Report

(EVERLIGHT ELECTRONICS CO., LTD.)

6-8 (NO. 6-8, ZHONGHUA RD., SHULIN DIST., NEW TAIPEI CITY 23860, TAIWAN)

Remark

(AfPS): GS PAHs

AfPS (German commission for Product Safety): GS PAHs requirements

1 (Category 1)

2 (Category 2)

3 (Category 3)

(Parameter)

Test Report

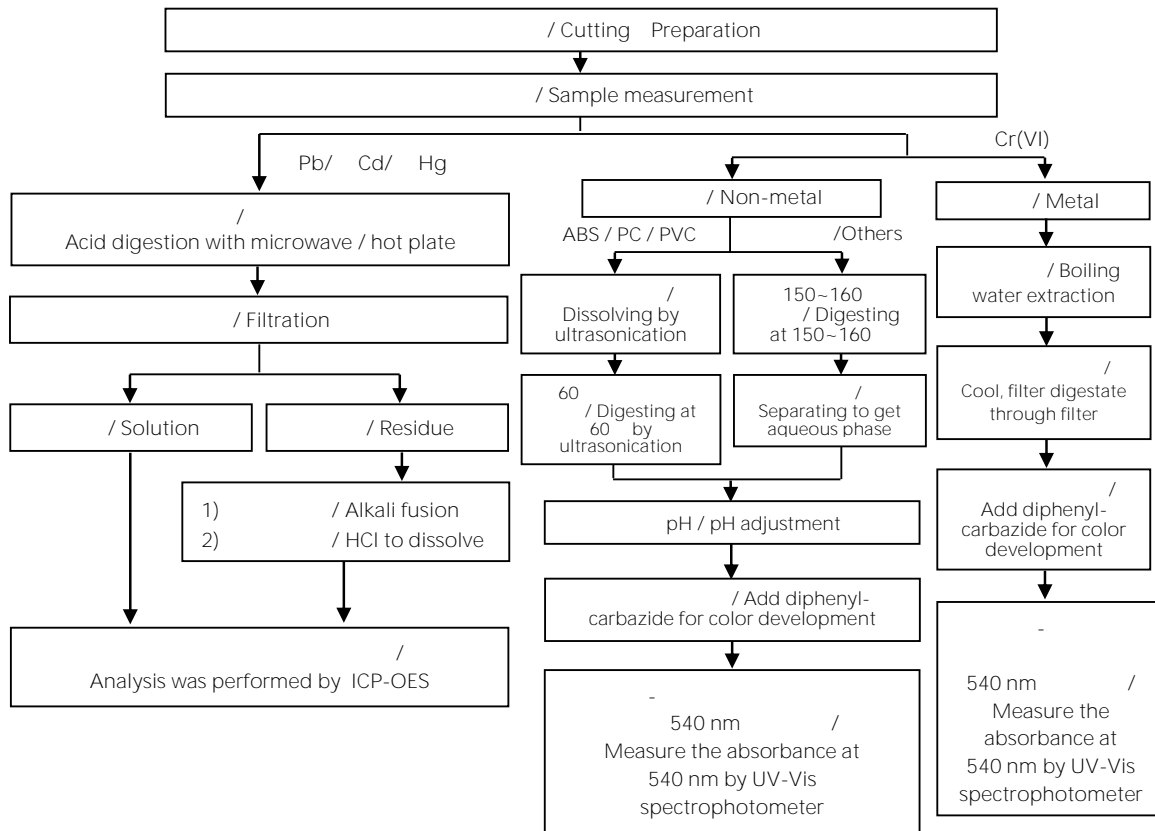
(EVERLIGHT ELECTRONICS CO., LTD.)

6-8 (NO. 6-8, ZHONGHUA RD., SHULIN DIST., NEW TAIPEI CITY 23860, TAIWAN)

/ Analytical flow chart of heavy metal

These samples were dissolved totally by pre-conditioning method according to below flow chart.

Cr⁶⁺ test method excluded



(No.): ETR23605635

(Date): 12-Jul-2023

(Page): 11 of 21

Test Report

(EVERLIGHT ELECTRONICS CO., LTD.)

6-8 (NO. 6-8, ZHONGHUA RD., SHULIN DIST., NEW TAIPEI CITY 23860, TAIWAN)

/ Flow chart of stripping method for metal analysis

/ The plating layer

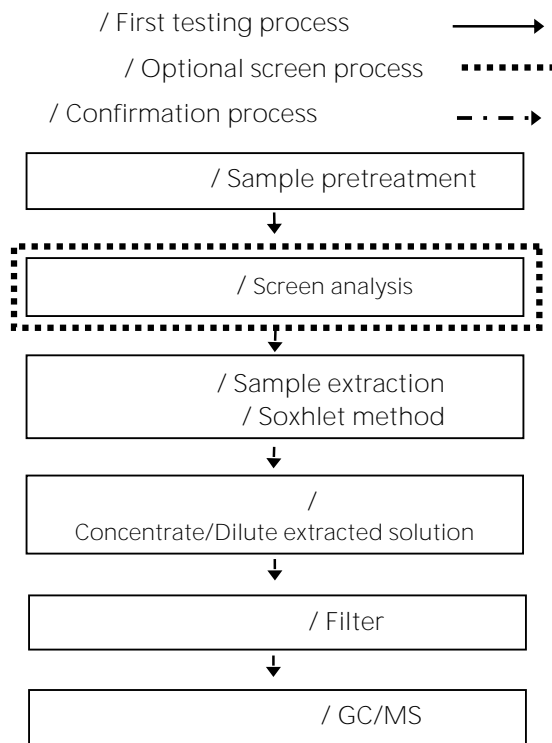
of samples were dissolved totally by pre-

Test Report

(EVERLIGHT ELECTRONICS CO., LTD.)

6-8 (NO. 6-8, ZHONGHUA RD., SHULIN DIST., NEW TAIPEI CITY 23860, TAIWAN)

/ Analytical flow chart - PBBs/PBDEs



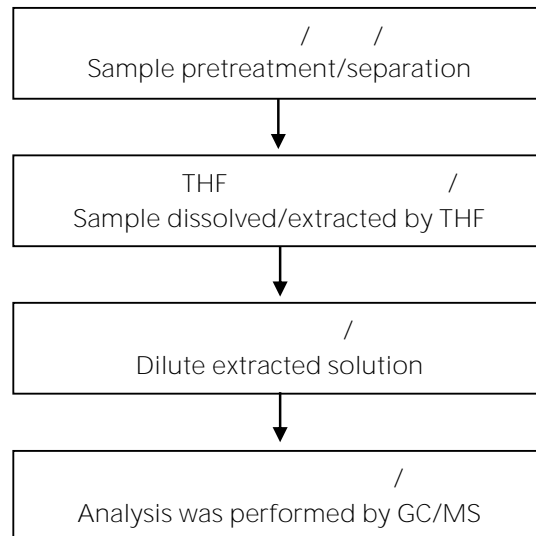
Test Report

(EVERLIGHT ELECTRONICS CO., LTD.)

6-8 (NO. 6-8, ZHONGHUA RD., SHULIN DIST., NEW TAIPEI CITY 23860, TAIWAN)

/ Analytical flow chart - Phthalate

/Test method: IEC 62321-8

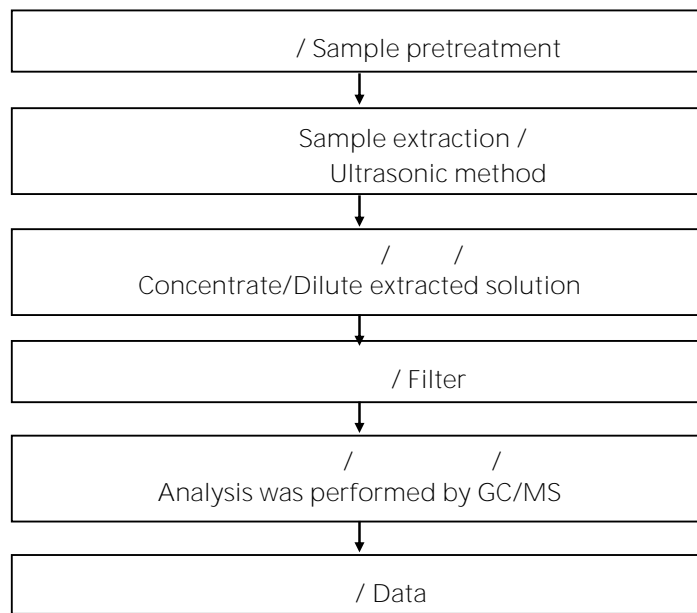


Test Report

(EVERLIGHT ELECTRONICS CO., LTD.)

6-8 (NO. 6-8, ZHONGHUA RD., SHULIN DIST., NEW TAIPEI CITY 23860, TAIWAN)

/ Analytical flow chart - HBCDD

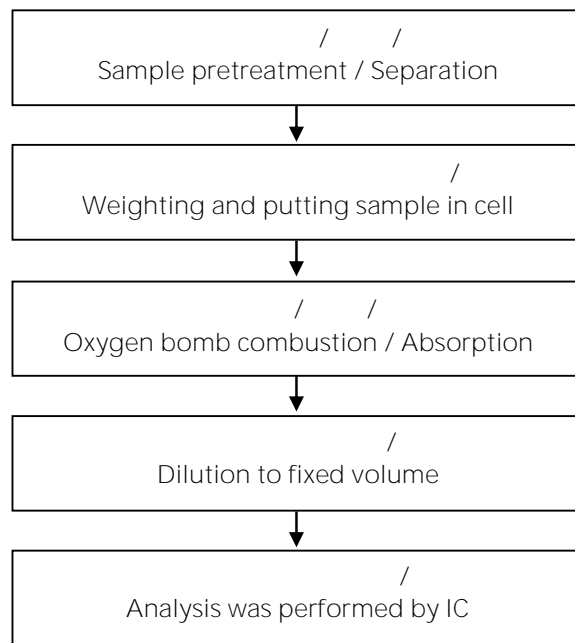


Test Report

(EVERLIGHT ELECTRONICS CO., LTD.)

6-8 (NO. 6-8, ZHONGHUA RD., SHULIN DIST., NEW TAIPEI CITY 23860, TAIWAN)

/ Analytical flow chart - Halogen

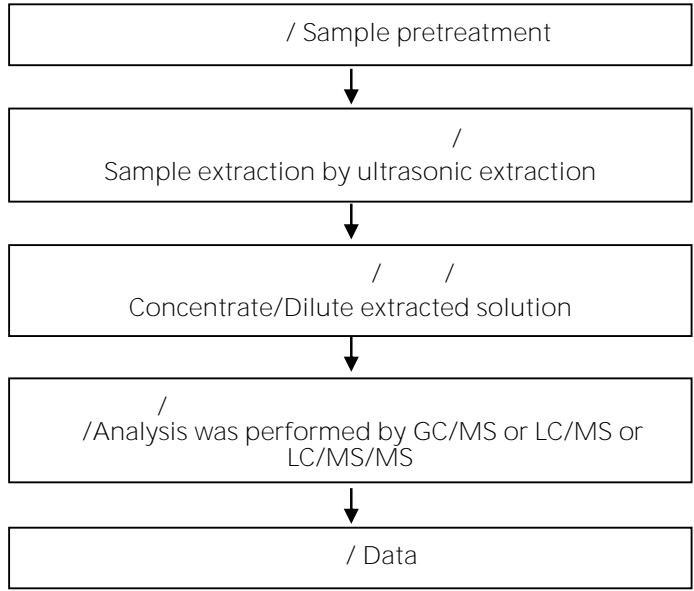


Test Report

(EVERLIGHT ELECTRONICS CO., LTD.)

6-8 (NO. 6-8, ZHONGHUA RD., SHULIN DIST., NEW TAIPEI CITY 23860, TAIWAN)

(/ /) / Analytical flow chart – PFAS (including PFOA/PFOS/its related compound, etc.)

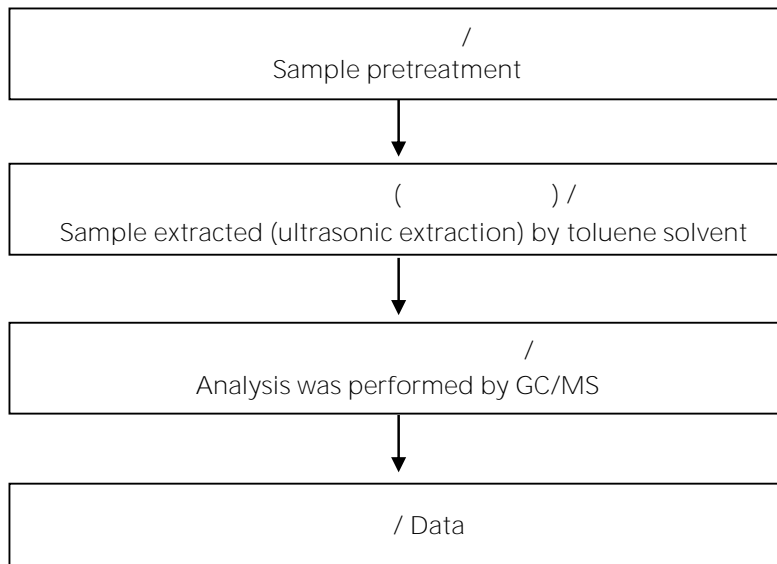


Test Report

(EVERLIGHT ELECTRONICS CO., LTD.)

6-8 (NO. 6-8, ZHONGHUA RD., SHULIN DIST., NEW TAIPEI CITY 23860, TAIWAN)

/
Analytical flow chart - PAHs (Polycyclic Aromatic Hydrocarbons)





(No.): ETR23605635

(Date): 12-Jul-2023

(Page): 18 of 21

Test Report

(EVERLIGHT ELECTRONICS CO., LTD.)

6-8 (NO. 6-8, ZHONGHUA RD., SHULIN DIST., NEW TAIPEI CITY 23860, TAIWAN)

This document is issued by the Company subject to its General Conditions of Service printed overleaf, available on request or accessible at <https://www.sgs.com.tw/terms-of-service> and, for electronic format documents, subject to Terms and Conditions for Electronic Documents at <https://www.sgs.com.tw/terms-of-service>. Attention is drawn to the limitation of liability, indemnification and jurisdiction issues defined therein. Any holder of this document is advised that information contained hereon reflects the Company's findings at the time of its intervention only and within the limits of client's instruction, if any. The Company's sole responsibility is to its Client and

Test Report

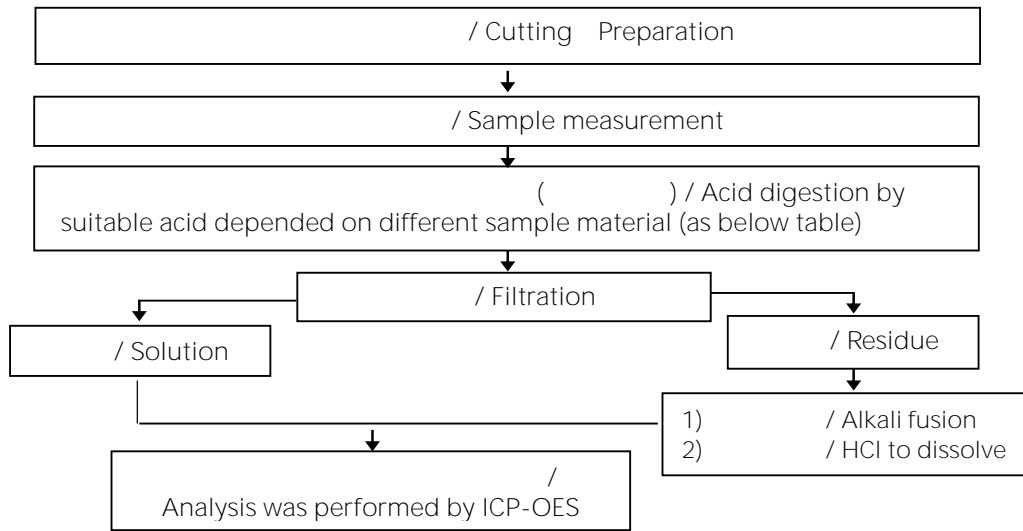
(EVERLIGHT ELECTRONICS CO., LTD.)

6-8 (NO. 6-8, ZHONGHUA RD., SHULIN DIST., NEW TAIPEI CITY 23860, TAIWAN)

ICP-OES

(Flow chart of digestion for the elements analysis performed by ICP-OES)

/ These samples were dissolved totally by pre-conditioning method according to below flow chart.



/ Steel, copper, aluminum, solder	/ Aqua regia, HNO ₃ , HCl, HF, H ₂ O ₂
/ Glass	/ HNO ₃ , HF
/ Gold, platinum, palladium, ceramic	/ Aqua regia
/ Silver	/ HNO ₃
/ Plastic	/ H ₂ SO ₄ , H ₂ O ₂ , HNO ₃ , HCl
/ Others	/ Added appropriate reagent to total digestion

Test Report

(EVERLIGHT ELECTRONICS CO., LTD.)

6-8 (NO. 6-8, ZHONGHUA RD., SHULIN DIST., NEW TAIPEI CITY 23860, TAIWAN)

* / *

(The tested sample / part is marked by an arrow if it's shown on the photo.)



Test Report

(EVERLIGHT ELECTRONICS CO., LTD.)

6-8 (NO. 6-8, ZHONGHUA RD., SHULIN DIST., NEW TAIPEI CITY 23860, TAIWAN)



** (End of Report) **